

Archaeological Evaluation of Land at Forstal Lane, Coxheath, Maidstone, Kent.



Site Code: FOR-EV-18

(Planning Application: 17/502072/)

SWAT Archaeology

The Office, School Farm Oast

Graveney Road Faversham, Kent, ME13 8UP

Email: info@swatarchaeology.co.uk

Tel.: 01795 532548 and 07885 700112

© SWAT Archaeology 2018 all rights reserved

Contents

List of Figures.....	3
List of Plates.....	3
1. Summary.....	4
2. Introduction.....	4
3. Site Description and Topography.....	4
4. Planning Background.....	5
5. Archaeological and Historical Background.....	5
6. Aims and Objectives.....	6
7. Methodology.....	6
8. Monitoring.....	7
9. Results.....	7
10. Discussion.....	7
11. Finds.....	7
12. Conclusion.....	7
13. Acknowledgements.....	8
14. References.....	8
15. KCC Summary Form.....	9

List of Figures:

Figure 1 – Site location

Figure 2 – 6 Plan of evaluation trenches and section drawings

List of Plates:

Plates 1 – 4 Views of the Site

Plates 5- 21 Trench photographs

Archaeological Evaluation of land at Forstal Lane, Coxheath, Maidstone, Kent ME17 4QF

1. Summary

Swale & Thames Survey Company (SWAT) carried out an archaeological evaluation of land at Forstal Lane, Coxheath in Kent. A Planning Application (17/502072/) for residential development and associated landscaping and other works was made to Maidstone Borough Council, whereby the Council requested that an Archaeological Evaluation be undertaken in order to determine the possible impact of the development on any archaeological remains. The work was carried out in accordance with the requirements set out within an Archaeological Specification (SWAT Specification A and KCC Manual Part B) and in discussion with the Senior Archaeological Heritage Officer, Kent County Council. The results of the excavation of 43 evaluation trenches revealed that no archaeological features were present within the trenches (Figure 2). The natural geology of Clay Sandy Silt was reached at an average depth of between 0.25m and 0.45m below the modern ground surface. The Archaeological Evaluation has therefore been successful in fulfilling the primary aims and objectives of the Archaeological Specification.

2. Introduction

Swale & Thames Survey Company (SWAT) was commissioned by the Chartway Group to carry out an archaeological evaluation at the above site. The work was carried out in accordance with the requirements set out within an Archaeological Specification (SWAT 2018) and in discussion with the Senior Archaeological Heritage Officer, Kent County Council. The evaluation was carried out from the 30th July to 8th August 2018.

3. Site Description and Topography

3.1 The site is situated in the village and civil parish of Coxheath within the Borough of Maidstone and the County of Kent. The village is centered on the Heath Road c.2.5 miles south of Maidstone and close to the villages of Linton, Yalding, East and West Farleigh and Boughton Monchelsea. The area is characterised by rural field systems to the north and a deer park to the east.

3.2 The village has been developed to both sides of the Heath Road with a mixture of medium and high density housing. The proposed development area (PDA) is bounded to the north by Forstal lane, to the east by agricultural fields, to the south by fields and medium density housing.

4. Planning Background

4.1 The land has a planning permission (17/502072/) for up to 210 dwellings, new accesses along with associated parking, access roads and 1.85 hectares of open space.

4.2 On the basis of the present archaeological information, the Archaeological Officer for Maidstone Borough Council recommended that the site should be subject to a programme of archaeological work in order to clarify the historical and archaeological elements within the site. Condition 4 of the planning permission states:

Prior to the commencement of development the applicant, or their agents or successors in title, will secure and implement:

i archaeological field evaluation works in accordance with a specification and written timetable which has been submitted to and approved by the Local Planning Authority; and

ii further archaeological investigation, recording and reporting, determined by the results of the evaluation, in accordance with a specification and timetable which has been submitted to and approved by the Local Planning Authority

Reason: To ensure that features of archaeological interest are properly examined and recorded.

5. Archaeological and Historical Background

5.1 The Kent County Council Historic Environment Record (KCCHER) has provided details of any previous investigations and discoveries. The potential of this area has been gauged in relation to the proximity of known archaeological remains and is defined in the Archaeological Desk-Based Assessment (SWAT 2017). The KCC Senior Archaeological Officer was consulted as part of the planning process and advised that:

“The site of the application lies in an area of archaeological potential associated with Iron Age activity. The site lies about 1km west of Boughton Camp oppidum which is considered to be an extensive Late Iron Age enclosure and was the foci for Iron Age activity in this area. Iron Age settlement and activity sites have been found around Boughton Camp, including to the south of this scheme” (Wendy Rogers dated 22May 2017).

5.3 The KCCHER has provided details of sites in the vicinity and the Archaeological Desk-Based assessment by SWAT Archaeology notes that:

“The PDA is characterised as ‘small regular with straight boundaries (parliamentary type enclosure)’ and is bounded by post 1810 settlement to the southwest and orchards to the northwest and southeast. There has been little archaeological investigation within the vicinity of the PDA. An archaeological evaluation was carried out by Wessex Archaeology on land north of Heath Road in 2015 (EKE14982), to the south boundary of the PDA; From eighteen trenches, six produced archaeological features or deposits in the form of a mixture of drainage or boundary ditches, pits and colluvial spread with finds of pottery and an unsocketed axe dating to the post medieval and modern period”.

6. Aims and Objectives

6.1 According the SWAT Archaeological Specification, the aims and objectives for the archaeological work were that:

“The primary objective of the archaeological evaluation is to establish or otherwise the presence of any potential archaeological features which may be impacted by the proposed development. The aims of this investigation are to determine the potential for archaeological activity and in particular the adjacent Iron Age oppidum and also any other Prehistoric, Roman and later archaeological activity.

6.2 The programme of archaeological work should be carried out in a phased approach and will commence with evaluation through trial trenching. This initial phase should determine whether any significant archaeological remains would be affected by the development and if so what mitigation measures are appropriate”.

7. Methodology

The Archaeological Specification called for an evaluation by trial trenching comprising a first phase of 43 trenches within the footprint of the proposed housing development. A 14 ton

360° tracked mechanical excavator with a 1.90m wide flat-bladed ditching bucket was used to remove the topsoil and subsoil to expose the natural geology and/or the archaeological horizon.

All archaeological work was carried out in accordance with the SWAT specification and the KCC Specification 'B'. A single context recording system was used to record the deposits, and context recording numbers were assigned to all deposits for recording purposes. All archaeological work was carried out in accordance with KCC, SWAT and ClfA standards and guidance.

8. Monitoring

Curatorial monitoring was available during the course of the evaluation.

9. Results

The evaluation has identified no archaeological features within the trenches and one geological feature in Trench 32. The trenches are recorded in Appendix 1.

10. Discussion

With numerous archaeological sites in the vicinity of the PDA it was expected that the evaluation may produce evidence of archaeological activity. However, no archaeological features or remains were found.

12. Conclusion

The archaeological evaluation has been successful in fulfilling the primary aims and objectives of the Specification. A common stratigraphic sequence was recognised across the site comprised of topsoil **(100)** sealing the subsoil **(101)** which overlay the natural geology **(102)**. Therefore, this evaluation has been successful in fulfilling the aims and objectives as set out in the planning condition and the Archaeological Specification.

13. Acknowledgements

SWAT Archaeology would like to thank the client, Chartway Group for commissioning the project. Thanks are also extended to Wendy Rogers Archaeological Officer, Kent County Council. Site survey and illustrations were produced by Bartek Cichy. The fieldwork was undertaken by Peter Cichy and the project was managed and report written by Dr Paul Wilkinson MCIfA.

Paul Wilkinson

05/09/2018

14. References

Chartered Institute for Field Archaeologists (CIfA), Rev (2017). *Standard and Guidance for archaeological field evaluation*

SWAT Archaeology (25/05/2018) *Written Scheme of Investigation for an Archaeological Evaluation of land at Forstal Lane, Coxheath, Maidstone, Kent ME17 4QF*

SWAT Archaeology (8/11/2016) Archaeological Desk Based Assessment in advance of the Proposed Development at Forstal Lane, Coxheath, Maidstone ME17 4QF

KCC Specification Manual Part B

Kent County Council HER Summary Form

Site Name: Land at Forstal Lane, Coxheath, Kent

SWAT Site Code: FORS/EV/18

Site Address: As above

Summary:

Swale and Thames Survey Company (SWAT) carried out Archaeological Evaluation on the development site above. The site has planning permission for residential housing whereby Kent County Council Heritage and Conservation (KCCHC) requested that Archaeological Evaluation be undertaken to determine the possible impact of the development on any archaeological remains.

The Archaeological Monitoring consisted of an Archaeological Evaluation which revealed no archaeology.

District/Unitary: Maidstone Borough Council

Period(s):

NGR (centre of site to eight figures) TQ 748 513

Type of Archaeological work: Archaeological Evaluation

Date of recording: August 2018

Unit undertaking recording: Swale and Thames Survey Company (SWAT. Archaeology)

Geology: Underlying geology is Hythe Formation

Title and author of accompanying report: Wilkinson P. (2017) Archaeological Evaluation of Land at Forstal Lane, Coxheath, Kent

Summary of fieldwork results (begin with earliest period first, add NGRs where appropriate)

The archaeological evaluation revealed no archaeological features.

Location of archive/finds: SWAT. Archaeology. Graveney Rd, Faversham, Kent. ME13 8UP

Contact at Unit: Paul Wilkinson

Date: 05/08/2018

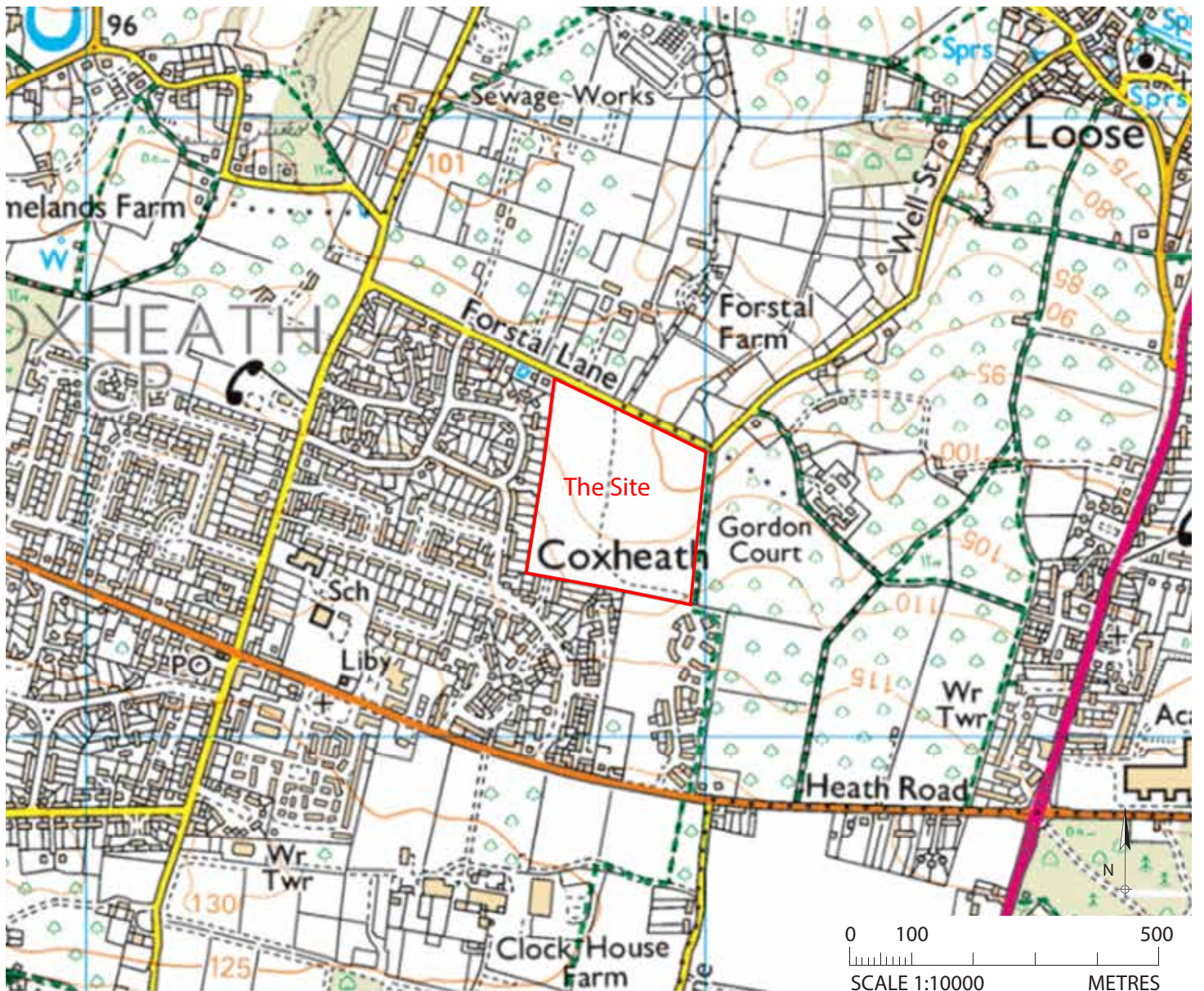


Figure 1: Site location map, scale 1:10000

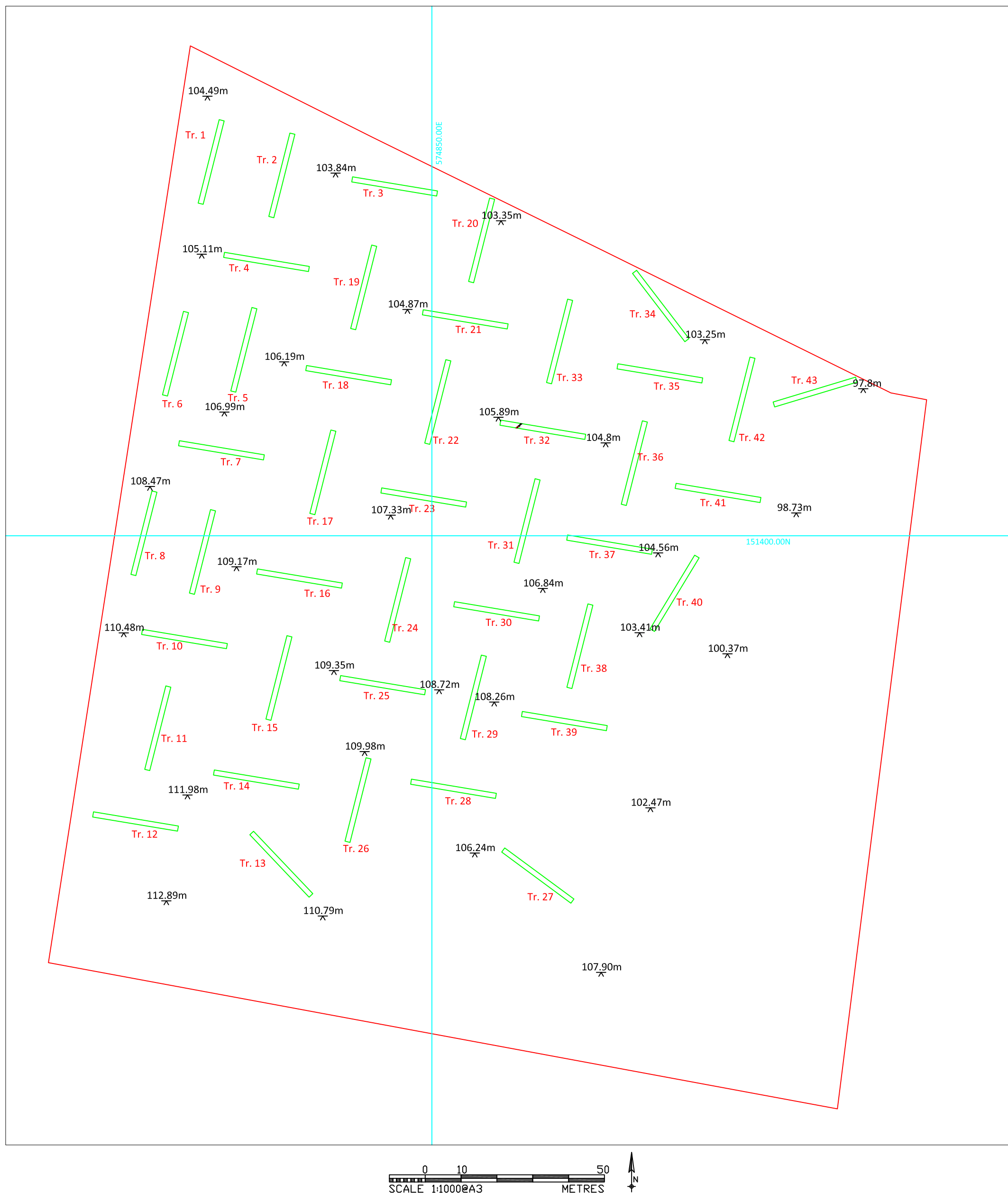


Figure 2: Coxheath, Forstal lane, Evaluation trenches.

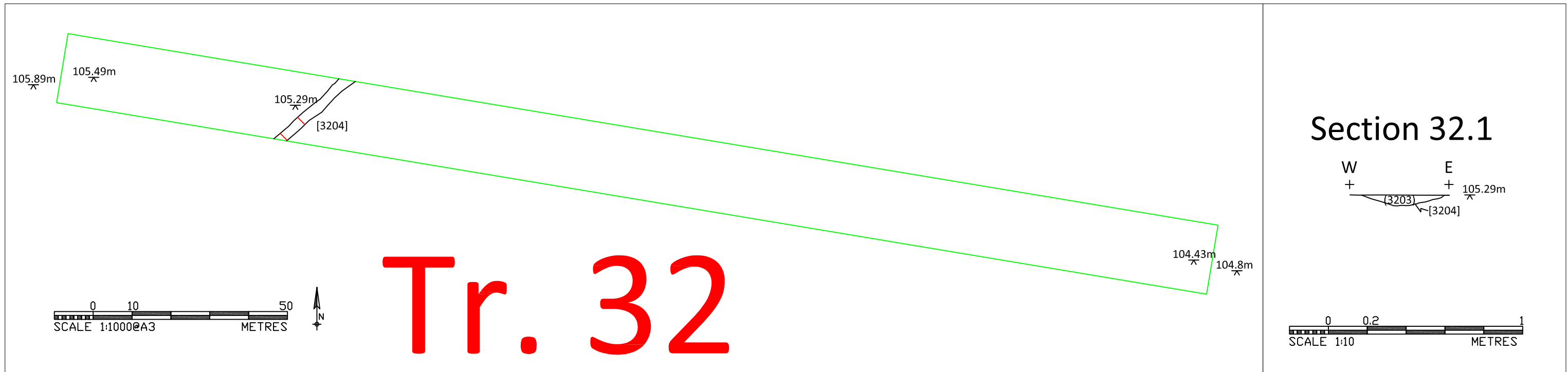


Figure 3: Plan of Trench 32 and section through [3204].

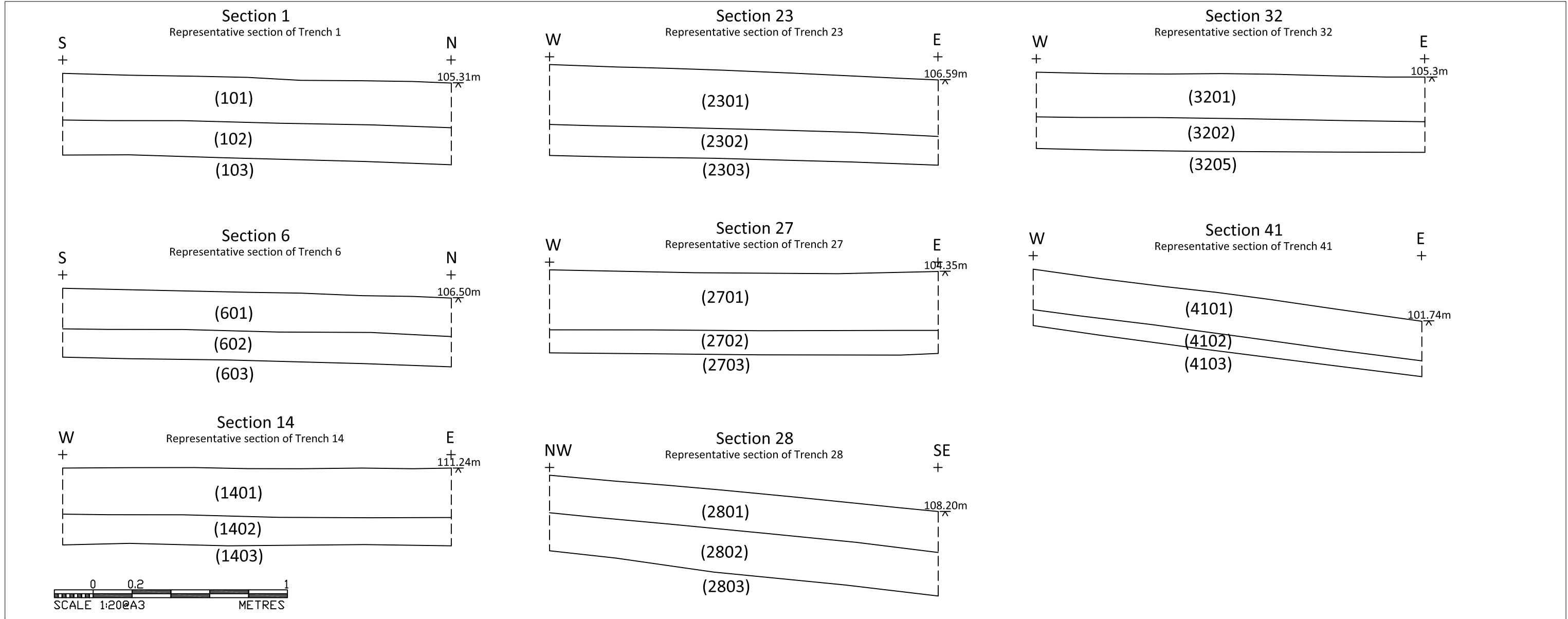


Figure 4: Representative sections.



Plate 1: Looking east at the site from its south west corner



Plate 2: Looking north at the site from its south west corner



Plate 3: Looking north at the site from its south east corner



Plate 4: Looking west at the site from its south east corner



Plate 5: Looking south at Trench 1



Plate 6: Looking west at representative section of Trench 1



Plate 7: Looking west at representative section of Trench 6



Plate 8: Looking north at Trench 6



Plate 9: Looking west at Trench 14



Plate 10: Looking north at representative section of Trench 14



Plate 11: Looking north at representative section of Trench 23



Plate 12: Looking east at Trench 23



Plate 13: Looking west at Trench 28



Plate 14: Looking south at representative section of Trench 28



Plate 15: Looking east at Trench 27



Plate 16: Looking east at Trench 32



Plate 17: Looking north at representative section of Trench 32



Plate 18: Looking north at representative section of Trench 41



Plate 19: Looking west at Trench 41



Plate 20: Looking south east at feature [3204] discarded as natural



Plate 21: Looking north east at section through natural feature [3204]



Plate 22: Looking north east at the site after trench backfilling.



Plate 23: Looking west north-west at the Forstal Lane with the site entrance visible on the left.

Appendix 1. Evaluation trench table

Trench 1	Dimensions: 30m x 1.8m Depth: 0.42m Trench alignment: NNE-SSW NNE-end Ground Level: 104.49m OD; SSW-end Ground Level: 104.67m OD		
Context	Description	Interpretation	Depth (m)
101	Mid compaction, dark grayish brown, sandy silt	Topsoil	0.00-0.24
102	Firm compaction, light brown, clayey sandy silt with sandstone (ironstone), occ. modern CBM fragments.	Subsoil Colluvium	0.24-0.42
103	Light orange brown, clayey sandy silt with freq. sandstone	Natural	0.42+

Trench 2	Dimensions: 30m x 1.8m Depth: 0.40m Trench alignment: NNE-SSW NNE-end Ground Level: 103.65m OD; SSW-end Ground Level: 104.64m OD		
Context	Description	Interpretation	Depth (m)
201	Mid compaction, dark grayish brown, sandy silt	Topsoil	0.00-0.27
202	Firm compaction, light brown, clayey sandy silt with sandstone (ironstone), occ. modern CBM fragments.	Subsoil Colluvium	0.27-0.37
203	Light orange brown, clayey sandy silt with moderate sandstone	Natural	0.37+

Trench 3	Dimensions: 30m x 1.8m Depth: 0.55m Trench alignment: ENE-WSW ENE-end Ground Level: 103.58m OD; WSW-end Ground Level: 103.84m OD		
Context	Description	Interpretation	Depth (m)
301	Mid compaction, dark grayish brown, sandy silt	Topsoil	0.00-0.25
302	Firm compaction, light brown, clayey sandy silt with sandstone	Subsoil Colluvium	0.25-0.55
303	Light orange brown, clayey sandy silt with freq. sandstone	Natural	0.55+

Trench 4	Dimensions: 30m x 1.8m Depth: 0.55m Trench alignment: ENE-WSW ENE-end Ground Level: 104.95m OD; WSW-end Ground Level: 105.11m OD		
Context	Description	Interpretation	Depth (m)
401	Mid compaction, dark grayish brown, clayey sandy silt	Topsoil	0.00-0.21
402	Firm compaction, light brown, clayey sandy silt with sandstone	Subsoil Colluvium	0.21-0.31
403	Light orange brown, clayey sandy silt with freq. sandstone	Natural	0.31+

Trench 5	Dimensions: 30m x 1.8m Depth: 0.55m Trench alignment: NNE-SSW NNE-end Ground Level: 105.48m OD; SSW-end Ground Level: 106.99m OD		
Context	Description	Interpretation	Depth (m)
501	Mid compaction, dark grayish brown, clayey sandy silt	Topsoil	0.00-0.26
502	Firm compaction, light brown, clayey sandy silt with sandstone	Subsoil Colluvium	0.26-0.44
503	Light orange brown, clayey sandy silt with freq. sandstone	Natural	0.44+

Trench 6	Dimensions: 30m x 1.8m Depth: 0.55m Trench alignment: NNE-SSW NNE-end Ground Level: 105.89m OD; SSW-end Ground Level: 107.12m OD		
Context	Description	Interpretation	Depth (m)
601	Mid compaction, dark grayish brown, clayey sandy silt	Topsoil	0.00-0.2
602	Firm compaction, light brown, clayey sandy silt with sandstone	Subsoil Colluvium	0.2-0.35
603	Light orange brown, clayey sandy silt with freq. sandstone	Natural	0.35+

Trench 7	Dimensions: 30m x 1.8m Depth: 0.25m Trench alignment: ENE-WSW ENE-end Ground Level: 107.82m OD; WSW-end Ground Level: 107.51m OD		
Context	Description	Interpretation	Depth (m)
701	Mid compaction, dark grayish brown, clayey sandy silt	Topsoil	0.00-0.15
702	Firm compaction, light brown, clayey sandy silt with sandstone	Subsoil Colluvium	0.15-0.25
703	Light orange brown, clayey sandy silt with freq. sandstone	Natural	0.25+

Trench 8	Dimensions: 30m x 1.8m Depth: 0.4m Trench alignment: NNE-SSW NNE-end Ground Level: 108.47m OD; SSW-end Ground Level: 109.88m OD		
Context	Description	Interpretation	Depth (m)
801	Mid compaction, dark grayish brown, clayey sandy silt	Topsoil	0.00-0.2
802	Firm compaction, light brown, clayey sandy silt with sandstone	Subsoil Colluvium	0.2-0.4
803	Light orange brown, clayey sandy silt with freq. sandstone	Natural	0.4+

Trench 9	Dimensions: 30m x 1.8m Depth: 0.31m Trench alignment: NNE-SSW NNE-end Ground Level: 108.36m OD; SSW-end Ground Level: 109.78m OD		
Context	Description	Interpretation	Depth (m)
901	Mid compaction, dark grayish brown, clayey sandy silt	Topsoil	0.00-0.18
902	Firm compaction, light brown, clayey sandy silt with sandstone	Subsoil Colluvium	0.18-0.28
903	Light orange brown, clayey sandy silt with freq. sandstone and patches of orange brown coarse sandy clay	Natural	0.28+

Trench 10	Dimensions: 30m x 1.8m Depth: 0.32m Trench alignment: ENE-WSW ENE-end Ground Level: 110.24m OD; WSW-end Ground Level: 110.48m OD		
Context	Description	Interpretation	Depth (m)
1001	Mid compaction, dark grayish brown, clayey sandy silt	Topsoil	0.00-0.2
1002	Firm compaction, light brown, clayey sandy silt with sandstone	Subsoil Colluvium	0.2-0.3
1003	Light orange brown, clayey sandy silt with freq. sandstone and patches of orange brown coarse sandy clay	Natural	0.3+

Trench 11	Dimensions: 30m x 1.8m Depth: 0.4m Trench alignment: NNE-SSW NNE-end Ground Level: 111.03m OD; SSW-end Ground Level: 112.05m OD		
Context	Description	Interpretation	Depth (m)
1101	Mid compaction, dark grayish brown, clayey sandy silt	Topsoil	0.00-0.3
1102	Firm compaction, light brown, clayey sandy silt with sandstone	Subsoil Colluvium	0.3-0.4
1103	Light orange brown, clayey sandy silt with freq. sandstone	Natural	0.4+

Trench 12	Dimensions: 30m x 1.8m Depth: 0.4m Trench alignment: ENE-WSW ENE-end Ground Level: 112.33m OD; WSW-end Ground Level: 112.59m OD		
Context	Description	Interpretation	Depth (m)
1201	Mid compaction, dark grayish brown, clayey sandy silt	Topsoil	0.00-0.27
1202	Firm compaction, light brown, clayey sandy silt with sandstone	Subsoil Colluvium	0.27-0.37
1203	Light orange brown, clayey sandy silt with freq. sandstone and patches of orange brown coarse sandy clay	Natural	0.38+

Trench 13	Dimensions: 30m x 1.8m Depth: 0.3m Trench alignment: NW-SE NW-end Ground Level: 112.23m OD; SE-end Ground Level: 110.79m OD		
Context	Description	Interpretation	Depth (m)
1301	Mid compaction, dark grayish brown, clayey sandy silt	Topsoil	0.00-0.15
1302	Firm compaction, light brown, clayey sandy silt with sandstone	Subsoil Colluvium	0.15-0.3
1303	Light orange brown, clayey sandy silt with freq. sandstone	Natural	0.3+

Trench 14	Dimensions: 30m x 1.8m Depth: 0.4m Trench alignment: ENE-WSW ENE-end Ground Level: 111.02m OD; WSW-end Ground Level: 111.49m OD		
Context	Description	Interpretation	Depth (m)
1401	Mid compaction, dark grayish brown, clayey sandy silt	Topsoil	0.00-0.25
1402	Firm compaction, light brown, clayey sandy silt with sandstone	Subsoil Colluvium	0.25-0.4
1403	Light orange brown, clayey sandy silt with freq. sandstone and patches of orange brown coarse sandy clay	Natural	0.4+

Trench 15	Dimensions: 30m x 1.8m Depth: 0.34m Trench alignment: NNE-SSW NNE-end Ground Level: 108.65m OD; SSW-end Ground Level: 110.05m OD		
Context	Description	Interpretation	Depth (m)
1501	Mid compaction, dark grayish brown, clayey sandy silt	Topsoil	0.00-0.2
1502	Firm compaction, light brown, clayey sandy silt with sandstone	Subsoil Colluvium	0.2-0.34
1503	Light grey, clayey sandy silt with freq. sandstone with outcrops of light orange brown clay	Natural	0.34+

Trench 16	Dimensions: 30m x 1.8m Depth: 0.35m Trench alignment: ENE-WSW ENE-end Ground Level: 108.25m OD; WSW-end Ground Level: 109.14m OD		
Context	Description	Interpretation	Depth (m)
1601	Mid compaction, dark grayish brown, clayey sandy silt	Topsoil	0.00-0.2
1602	Firm compaction, light brown, clayey sandy silt with sandstone	Subsoil Colluvium	0.2-0.35
1603	Light orange brown, clayey sandy silt with freq. sandstone and patches of orange brown coarse sand	Natural	0.35+

Trench 17	Dimensions: 30m x 1.8m Depth: 0.34m Trench alignment: NNE-SSW NNE-end Ground Level: 106.85m OD; SSW-end Ground Level: 107.83m OD		
Context	Description	Interpretation	Depth (m)
1701	Mid compaction, dark grayish brown, clayey sandy silt	Topsoil	0.00-0.2
1702	Firm compaction, light brown, clayey sandy silt with sandstone	Subsoil Colluvium	0.2-0.4
1703	Light grey with light orange brown patches, clayey sandy silt with freq. sandstone with outcrops of light orange brown coarse sand	Natural	0.4+

Trench 18	Dimensions: 30m x 1.8m Depth: 0.4m Trench alignment: ENE-WSW ENE-end Ground Level: 106.44m OD; WSW-end Ground Level: 106.23m OD		
Context	Description	Interpretation	Depth (m)
1801	Mid compaction, dark grayish brown, clayey sandy silt	Topsoil	0.00-0.3
1802	Firm compaction, light brown, clayey sandy silt with sandstone	Subsoil Colluvium	0.3-0.4
1803	Light orange brown, clayey sandy silt with freq. sandstone	Natural	0.4+

Trench 19	Dimensions: 30m x 1.8m Depth: 0.4m Trench alignment: NNE-SSW NNE-end Ground Level: 104.12m OD; SSW-end Ground Level: 105.15m OD		
Context	Description	Interpretation	Depth (m)
1901	Mid compaction, dark grayish brown, clayey sandy silt	Topsoil	0.00-0.25
1902	Firm compaction, light brownish grey, clayey sandy silt with sandstone	Subsoil Colluvium	0.25-0.35
1903	Light grey, clayey sandy silt with freq. sandstone with outcrops of light orange brown clay	Natural	0.35+

Trench 20	Dimensions: 30m x 1.8m Depth: 0.4m Trench alignment: NNE-SSW NNE-end Ground Level: 103.25m OD; SSW-end Ground Level: 104.12m OD		
Context	Description	Interpretation	Depth (m)
2001	Mid compaction, dark grayish brown, clayey sandy silt	Topsoil	0.00-0.25
2002	Firm compaction, light brownish grey, clayey sandy silt with sandstone	Subsoil Colluvium	0.25-0.45
2003	Light grey, clayey sandy silt with freq. sandstone with outcrops of light orange brown clay	Natural	0.45+

Trench 21	Dimensions: 30m x 1.8m Depth: 0.35m Trench alignment: ENE-WSW ENE-end Ground Level: 104.67m OD; WSW-end Ground Level: 104.87m OD		
Context	Description	Interpretation	Depth (m)
2101	Mid compaction, dark grayish brown, clayey sandy silt	Topsoil	0.00-0.3
2102	Firm compaction, light brown, clayey sandy silt with sandstone	Subsoil Colluvium	0.3-0.4
2103	Light orange brown, clayey sandy silt with freq. sandstone	Natural	0.4+

Trench 22	Dimensions: 30m x 1.8m Depth: 0.4m Trench alignment: NNE-SSW NNE-end Ground Level: 105.32m OD; SSW-end Ground Level: 106.63m OD		
Context	Description	Interpretation	Depth (m)
2201	Mid compaction, dark grayish brown, clayey sandy silt	Topsoil	0.00-0.2
2202	Firm compaction, light brownish grey, clayey sandy silt with sandstone	Subsoil Colluvium	0.2-0.36
2203	Light grey, clayey sandy silt with freq. sandstone and outcrops of light orange brown clay	Natural	0.36+

Trench 23	Dimensions: 30m x 1.8m Depth: 0.45m Trench alignment: ENE-WSW ENE-end Ground Level: 106.97m OD; WSW-end Ground Level: 107.23m OD		
Context	Description	Interpretation	Depth (m)
2301	Mid compaction, dark grayish brown, clayey sandy silt	Topsoil	0.00-0.3
2302	Firm compaction, light brown, clayey sandy silt with sandstone	Subsoil Colluvium	0.3-0.45
2303	Light orange brown, clayey sandy silt with freq. sandstone and outcrops of light orange brown clay	Natural	0.45+

Trench 24	Dimensions: 30m x 1.8m Depth: 0.36m Trench alignment: NNE-SSW NNE-end Ground Level: 107.75m OD; SSW-end Ground Level: 108.95m OD		
Context	Description	Interpretation	Depth (m)
2401	Mid compaction, dark grayish brown, clayey sandy silt	Topsoil	0.00-0.3
2402	Firm compaction, light brownish grey, clayey sandy silt with sandstone	Subsoil Colluvium	0.3-0.48
2403	Light grey, clayey sandy silt with freq. sandstone and outcrops of light orange brown clay	Natural	0.48+

Trench 25	Dimensions: 30m x 1.8m Depth: 0.4m Trench alignment: ENE-WSW ENE-end Ground Level: 108.72m OD; WSW-end Ground Level: 109.34m OD		
Context	Description	Interpretation	Depth (m)
2501	Mid compaction, dark grayish brown, clayey sandy silt	Topsoil	0.00-0.3
2502	Firm compaction, light brown, clayey sandy silt with sandstone	Subsoil Colluvium	0.3-0.4
2503	Light orange brown, clayey sandy silt with freq. sandstone and outcrops of light orange brown coarse sand	Natural	0.4+

Trench 26	Dimensions: 30m x 1.8m Depth: 0.3m Trench alignment: NNE-SSW NNE-end Ground Level: 109.98m OD; SSW-end Ground Level: 110.38m OD		
Context	Description	Interpretation	Depth (m)
2601	Mid compaction, dark grayish brown, clayey sandy silt	Topsoil	0.00-0.2
2602	Firm compaction, light brownish grey, clayey sandy silt with sandstone	Subsoil Colluvium	0.2-0.3
2603	Light grey, clayey sandy silt with freq. sandstone and outcrops of light orange brown coarse sand	Natural	0.3+

Trench 27	Dimensions: 30m x 1.8m Depth: 0.5m Trench alignment: NW-SE NW-end Ground Level: 105.04m OD; SE-end Ground Level: 105.01m OD Ground level at the middle of the trench: 104.35 m OD		
Context	Description	Interpretation	Depth (m)
2701	Mid compaction, dark grayish brown, clayey sandy silt	Topsoil	0.00-0.3
2702	Firm compaction, light brownish grey, clayey sandy silt with sandstone	Subsoil Colluvium	0.3-0.42
2703	Light orange brown, clayey sandy silt with occ. sandstone	Natural	0.42+

Trench 28	Dimensions: 30m x 1.8m Depth: 0.48m Trench alignment: ENE-WSW ENE-end Ground Level: 106.83m OD; WSW-end Ground Level: 109.48m OD		
Context	Description	Interpretation	Depth (m)
2801	Mid compaction, dark grayish brown, clayey sandy silt	Topsoil	0.00-0.2
2802	Firm compaction, light brown, clayey sandy silt with sandstone	Subsoil Colluvium	0.2-0.48
2803	Light orange brown, sandy silt with freq. sandstone and outcrops of light orange clay	Natural	0.48+

Trench 29	Dimensions: 30m x 1.8m Depth: 0.3m Trench alignment: NNE-SSW NNE-end Ground Level: 107.99m OD; SSW-end Ground Level: 108.51m OD		
Context	Description	Interpretation	Depth (m)
2901	Mid compaction, dark grayish brown, clayey sandy silt	Topsoil	0.00-0.2
2902	Firm compaction, light brownish grey, clayey sandy silt with sandstone	Subsoil Colluvium	0.2-0.4
2903	Light grey, clayey sandy silt with freq. sandstone and outcrops of light orange brown clay	Natural	0.4+

Trench 30	Dimensions: 30m x 1.8m Depth: 0.4m Trench alignment: ENE-WSW ENE-end Ground Level: 107.02m OD; WSW-end Ground Level: 108.7m OD		
Context	Description	Interpretation	Depth (m)
3001	Mid compaction, dark grayish brown, clayey sandy silt	Topsoil	0.00-0.24
3002	Firm compaction, light brown, clayey sandy silt with sandstone	Subsoil Colluvium	0.24-0.4
3003	Light orange brown, sandy silt with freq. sandstone and outcrops of light orange clay	Natural	0.4+

Trench 31	Dimensions: 30m x 1.8m Depth: 0.3m Trench alignment: NNE-SSW NNE-end Ground Level: 106.23m OD; SSW-end Ground Level: 107.04m OD		
Context	Description	Interpretation	Depth (m)
3101	Mid compaction, dark grayish brown, clayey sandy silt	Topsoil	0.00-0.3
3102	Firm compaction, light brownish grey, clayey sandy silt with sandstone	Subsoil Colluvium	0.3-0.43
3103	Light grey, clayey sandy silt with freq. sandstone and outcrops of light orange brown coarse sandy clay	Natural	0.43+

Trench 32	Dimensions: 30m x 1.8m Depth: 0.4m Trench alignment: ENE-WSW ENE-end Ground Level: 104.8m OD; WSW-end Ground Level: 105.89m OD		
Context	Description	Interpretation	Depth (m)
3201	Mid compaction, dark grayish brown, clayey sandy silt	Topsoil	0.00-0.23
3202	Firm compaction, light brown, clayey sandy silt with sandstone	Subsoil Colluvium	0.23-0.4
3203	Firm compaction, light brown silt. No inclusions	Fill of [3204]	0.4-0.46
3204	Linear NE-SW aligned shallow gully with moderate sides and undulating base	Cut of gully /natural - water eroded	0.4-0.46
3205	Light orange brown, sandy silt with freq. sandstone and outcrops of light orange clay	Natural	0.4+

Trench 33	Dimensions: 30m x 1.8m Depth: 0.45m Trench alignment: NNE-SSW NNE-end Ground Level: 103.81m OD; SSW-end Ground Level: 105.1m OD		
Context	Description	Interpretation	Depth (m)
3301	Mid compaction, dark grayish brown, clayey sandy silt	Topsoil	0.00-0.32
3302	Firm compaction, light brownish grey, clayey sandy silt with sandstone	Subsoil Colluvium	0.32-0.43
3303	Light grey, clayey sandy silt with freq. sandstone and outcrops of light orange brown coarse sandy clay	Natural	0.43+

Trench 34	Dimensions: 30m x 1.8m Depth: 0.44m Trench alignment: NW-SE NW-end Ground Level: 103.22m OD; SE-end Ground Level: 103.34m OD		
Context	Description	Interpretation	Depth (m)
3401	Mid compaction, dark grayish brown, clayey sandy silt	Topsoil	0.00-0.3
3402	Firm compaction, light brownish grey, clayey sandy silt with sandstone	Subsoil Colluvium	0.3-0.42
3403	Light grey, clayey sandy silt with moderate. sandstone	Natural	0.42+

Trench 35	Dimensions: 30m x 1.8m Depth: 0.45m Trench alignment: ENE-WSW ENE-end Ground Level: 102.85m OD; WSW-end Ground Level: 104.4m OD		
Context	Description	Interpretation	Depth (m)
3501	Mid compaction, dark grayish brown, clayey sandy silt	Topsoil	0.00-0.32
3502	Firm compaction, light brown, clayey sandy silt with sandstone	Subsoil Colluvium	0.32-0.43
3503	Light grey, clayey sandy silt with moderate. sandstone and outcrops of orange clay	Natural	0.43+

Trench 36	Dimensions: 30m x 1.8m Depth: 0.46m Trench alignment: NNE-SSW NNE-end Ground Level: 104.28m OD; SSW-end Ground Level: 105.28m OD		
Context	Description	Interpretation	Depth (m)
3601	Mid compaction, dark grayish brown, clayey sandy silt	Topsoil	0.00-0.3
3602	Firm compaction, light brownish grey, clayey sandy silt with sandstone	Subsoil Colluvium	0.3-0.46
3603	Light grey, clayey sandy silt with freq. sandstone and patches of grey sandy silt	Natural	0.46+

Trench 37	Dimensions: 30m x 1.8m Depth: 0.4m Trench alignment: ENE-WSW ENE-end Ground Level: 104.56m OD; WSW-end Ground Level: 106.2m OD		
Context	Description	Interpretation	Depth (m)
3701	Mid compaction, dark grayish brown, clayey sandy silt	Topsoil	0.00-0.28
3702	Firm compaction, light brown, clayey sandy silt with sandstone	Subsoil Colluvium	0.28-0.4
3703	Light grey with orange patches, clayey sandy silt with freq. sandstone	Natural	0.4+

Trench 38	Dimensions: 30m x 1.8m Depth: 0.4m Trench alignment: NNE-SSW NNE-end Ground Level: 106.08m OD; SSW-end Ground Level: 106.27m OD		
Context	Description	Interpretation	Depth (m)
3801	Mid compaction, dark grayish brown, clayey sandy silt	Topsoil	0.00-0.26
3802	Firm compaction, light brownish grey, clayey sandy silt with sandstone	Subsoil Colluvium	0.26-0.4
3803	Light grey with orange patches, clayey sandy silt with freq. sandstone and outcrops of orange clay	Natural	0.4+

Trench 39	Dimensions: 30m x 1.8m Depth: 0.3m Trench alignment: ENE-WSW ENE-end Ground Level: 103.87m OD; WSW-end Ground Level: 107.44m OD		
Context	Description	Interpretation	Depth (m)
3901	Mid compaction, dark grayish brown, clayey sandy silt	Topsoil	0.00-0.22
3902	Firm compaction, light brownish grey, clayey sandy silt with sandstone	Subsoil Colluvium	0.22-0.25
3903	Light grey with orange patches, clayey sandy silt with moderate. sandstone and outcrops of orange brown clay	Natural	0.25+

Trench 40	Dimensions: 30m x 1.8m Depth: 0.4m Trench alignment: NE-SW NE-end Ground Level: 103.50m OD; SW-end Ground Level: 103.41m OD		
Context	Description	Interpretation	Depth (m)
4001	Mid compaction, dark grayish brown, clayey sandy silt	Topsoil	0.00-0.24
4002	Firm compaction, light brown, clayey sandy silt with sandstone	Subsoil Colluvium	0.24-0.4
4003	Light grey with orange patches, clayey sandy silt with freq. sandstone and outcrops of orange coarse sand	Natural	0.4+

Trench 41	Dimensions: 30m x 1.8m Depth: 0.3m Trench alignment: ENE-WSW ENE-end Ground Level: 103.73m OD; WSW-end Ground Level: 99.74m OD		
Context	Description	Interpretation	Depth (m)
4101	Mid compaction, dark grayish brown, clayey sandy silt	Topsoil	0.00-0.2
4102	Firm compaction, light brownish grey, clayey sandy silt with sandstone	Subsoil Colluvium	0.2-0.3
4103	Light orange brown coarse sand and clay with freq. sandstone and outcrops of grey clay sandy silt	Natural	0.3+

Trench 42	Dimensions: 30m x 1.8m Depth: 0.35m Trench alignment: NNE-SSW NNE-end Ground Level: 102.5m OD; SSW-end Ground Level: 103.02m OD		
Context	Description	Interpretation	Depth (m)
4201	Mid compaction, dark grayish brown, clayey sandy silt	Topsoil	0.00-0.27
4202	Firm compaction, light brownish grey, clayey sandy silt with occ. sandstone	Subsoil Colluvium	0.27-0.33
4203	Light grey with orange patches, clayey sandy silt with moderate sandstone	Natural	0.33+

Trench 43	Dimensions: 30m x 1.8m Depth: 0.33m Trench alignment: NNE-SSW NNE-end Ground Level: 98.02m OD; SSW-end Ground Level: 101.34m OD		
Context	Description	Interpretation	Depth (m)
4301	Mid compaction, dark grayish brown, clayey sandy silt	Topsoil	0.00-0.17
4302	Firm compaction, light brownish grey, clayey sandy silt with sandstone	Subsoil Colluvium	0.17-0.28
4303	Light grey with orange patches, clayey sandy silt with occ. sandstone	Natural	0.28+